

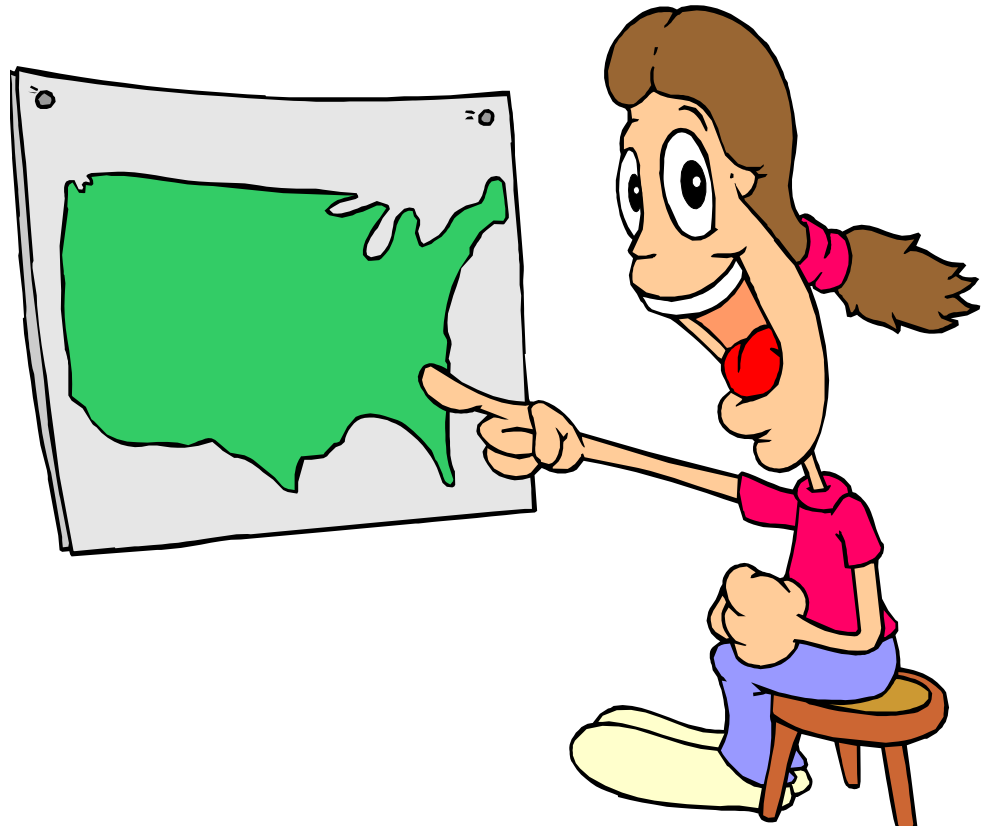


Registration 2017-2018

What to expect in the
Seventh grade!

The Main Schedule

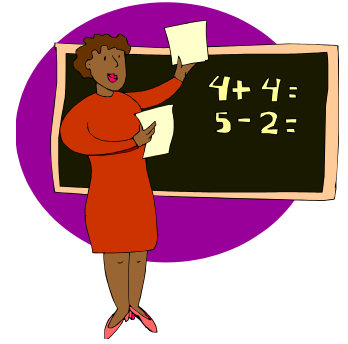
- Homeroom
- 4 Core Classes
- Electives
- Lunch
- 9 periods



7th Grade

- In 7th grade, the school curriculum becomes a little more challenging and requires students to put in more quality effort into their work.
- You will be expected to be your own advocate when it comes to your academic success (you are becoming more independent young men and women).

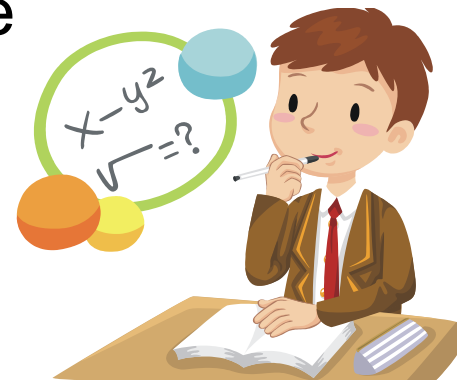
Recommendations



- English/Language Arts - Your ELA teacher will recommend the appropriate class for you. Advanced ELA is not offered.
- Math - Your Math teacher will recommend the appropriate class for you based on WCPSS Math placement policy.

Math Class Recommendations

- Math 7 - students must have mastered most of the sixth grade curriculum.
- Math 7 Plus – is a compacted course comprised of a portion of standards from Math 7 and a portion of standards from Math 8. Students must demonstrate a desire and ability to accelerate in mathematics.
- NC Math I – This middle school course is a compacted course comprised of a portion of the Math 8 standards and all of the NC Math I standards. Must have completed Math 7+. Your grade in this class be posted on your high school transcript.



Math Placement Overrides

- If your parent/guardian does not agree with your Math class recommendation, they will need to email your counselor to discuss placement.
- 7th Grade Counselor
- Mr. Lee
- rlee2@wcpss.net
- The teacher's recommendation is what will be printed on your course request form.



If you are transferring...

- Please let us know if you want to transfer back to another school or if you are moving to another state. That will allow us to accurately count the spaces we have available for new student applicants.
- Plus we can get your information to the correct school.



Year-Long Elective Options

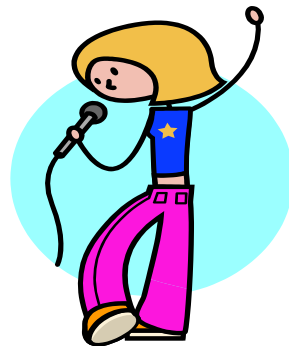
- **Intermediate Band** (You must have taken band in sixth grade (beginning band) or have permission from the band director)

This class is a continuation of the skills taught in Beginning Band with further development of tone production, breath support, and music reading. Students should anticipate some after-school practices and evening performances.



Semester-Long Elective Options

- **Chorus:** Students apply correct singing technique and various elements of musical expression through developmentally appropriate and historic vocal literature. Students learn how to use traditional notation in order to learn music, and to respond correctly to conductors' gestures both in rehearsal and public performance. Students will study vocal music and its relationship to other cultures, eras, and geographical locations.
- **Dramatics:** Students develop specific skills that allow them to study and create characters for the stage. Activities include stage directions, simple set and costume design, prop collection, and play production.



Semester-Long Elective Options

- **Advanced Computer Skills and Applications**

- This is 18 week course is broken down into two, nine week courses:

- Introduction to Office Productivity (9 weeks)
 - Office Productivity Applications (9 weeks)



When signing up for this course on Power School, you must select the course “Introduction to Office Productivity” and the system will automatically enroll you in both nine week courses

This middle school course is composed of instructional modules designed to provide hands-on instruction using software common in the workplace. The software applications include word processing, presentation, spreadsheet, database, and desktop publishing. English language arts and mathematics are reinforced.

Semester-Long Elective Options

- **Visual Composition** (Art)

Students will engage in deep study of the elements and principles of art centered on the curriculum set forth in the North Carolina Essential Standards for Visual Art. Two and three-dimensional techniques will be taught using a variety of media. Students explore various cultures, art history and learn to think and write critically about master work as well as their own.



Semester-Long Elective Options

- **Spanish Beginning Less Than 1 Year** (Beginning Spanish)

This course begins the study of the Spanish language and culture and is the first part in the Spanish curriculum series for high school credit. Major topics include greetings, conversation questions, telling time, classroom objects, asking for help, the parts of the body, infinitive verbs, expressing likes and dislikes, definite and indefinite articles, adjectives, subject pronouns, the present tense of –ar verbs, and the plurals of nouns and articles. Students who successfully complete this course should continue the Spanish curriculum series for high school credit by taking Intermediate Spanish.

- **Spanish Beginning 1 Year** (Intermediate Spanish)

Prerequisite: Beginning Spanish. This course continues the study of the Spanish language and culture, refining grammatical and vocabulary topics. Major topics include foods, the present tense of –er and –ir verbs, the plurals of adjectives, the verb ser, the verb ir, question words, places, leisure activities, irregular verbs, possessive adjectives, family, celebrations, the restaurant, and Middle School Program Planning Guide 2017-2018 Page 23 personal descriptions. Students who successfully complete this course should continue the Spanish curriculum series for high school credit by taking Advanced Spanish.

Semester-Long Elective Options

- **Exploring FACS- Consumer Focus**

- This is 18 week course is broken down into two, nine week courses:
- Exploring Apparel and Interior Design (9 weeks)
- **Understanding Personal Finance and Hospitality** (9 weeks)



When signing up for this course on Power School, you must select the course “Understanding Personal Finance and Hospitality” and the system will automatically enroll you in both nine week courses

This course is composed of instructional modules designed to explore basic Family and Consumer Sciences foundations and skill sets. The modules that are covered in this course are: personal finance and resource management, food service and hospitality, apparel, and interior design. English language arts and mathematics are reinforced. Students learn life management skills to prepare them for their roles in the family and the workplace. Students learn how to manage personal resources, concepts of personal nutrition and wellness, simple food preparation, and employability skills.



Semester-Long Elective Options

- **Exploring Technological Systems**

- This is 18 week course is broken down into two, nine week courses:

- Technological Issues and Impacts (9 weeks)

- Exploring Technological Systems (9 weeks)

When signing up for this course on Power School, you must select the course “Technological Issues and Impacts” and the system will automatically enroll you in both nine week courses

This course focuses on students’ understanding how technological systems work together to solve problems and capture opportunities. As technology becomes more integrated and systems become dependent upon each other, this course gives students a general background on the different types of systems, with specific concentration on the connections between these systems. Art, English language arts, mathematics and science are reinforced.

How to Register for Classes

- All students will register for classes on **Powerschool** and will need to access NC Cloud account. If you can not access NC Cloud your counselor will select your courses for you.



Registration Timeline

- 6-3: Class Registration in the Computer Lab Room 202 on April 17th during SS class (5th & 6th period)
- 6-2: Class Registration in the Computer Lab Room 202 on April 18th during Science clas (5th & 6th period)
- 6-1: TBD
- 6-4: TBD



Online Registration

- Go to the Lufkin Road MS website (<http://www.wcpss.net/lufkinroadms>)
- Scroll down and click on “Home Base”
- Under “Students” click on the link to get to the NCEd Cloud (<https://my.ncedcloud.org>)
- Enter your student username and password
- Click on Power School
- On the left hand side click “Class Registration”